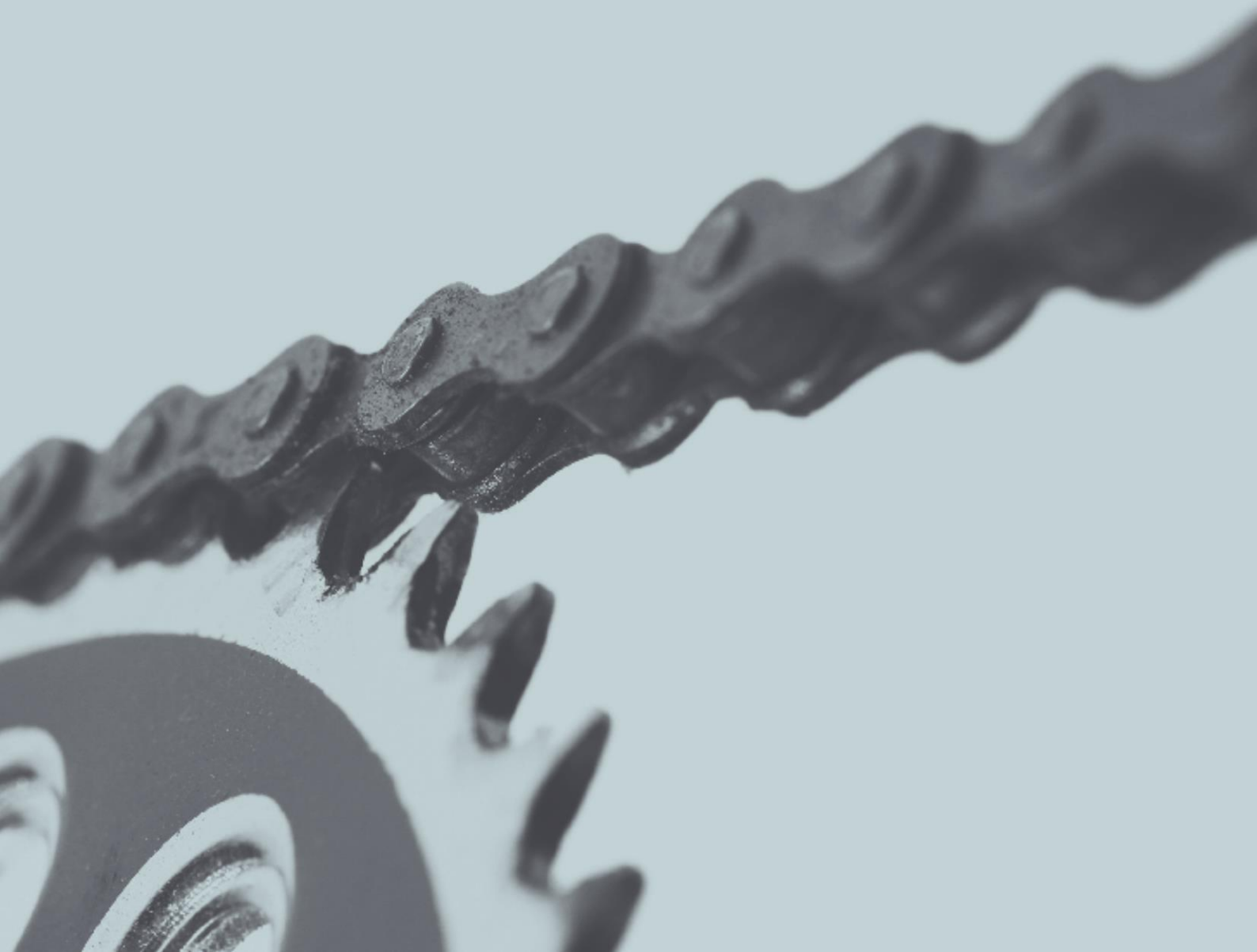




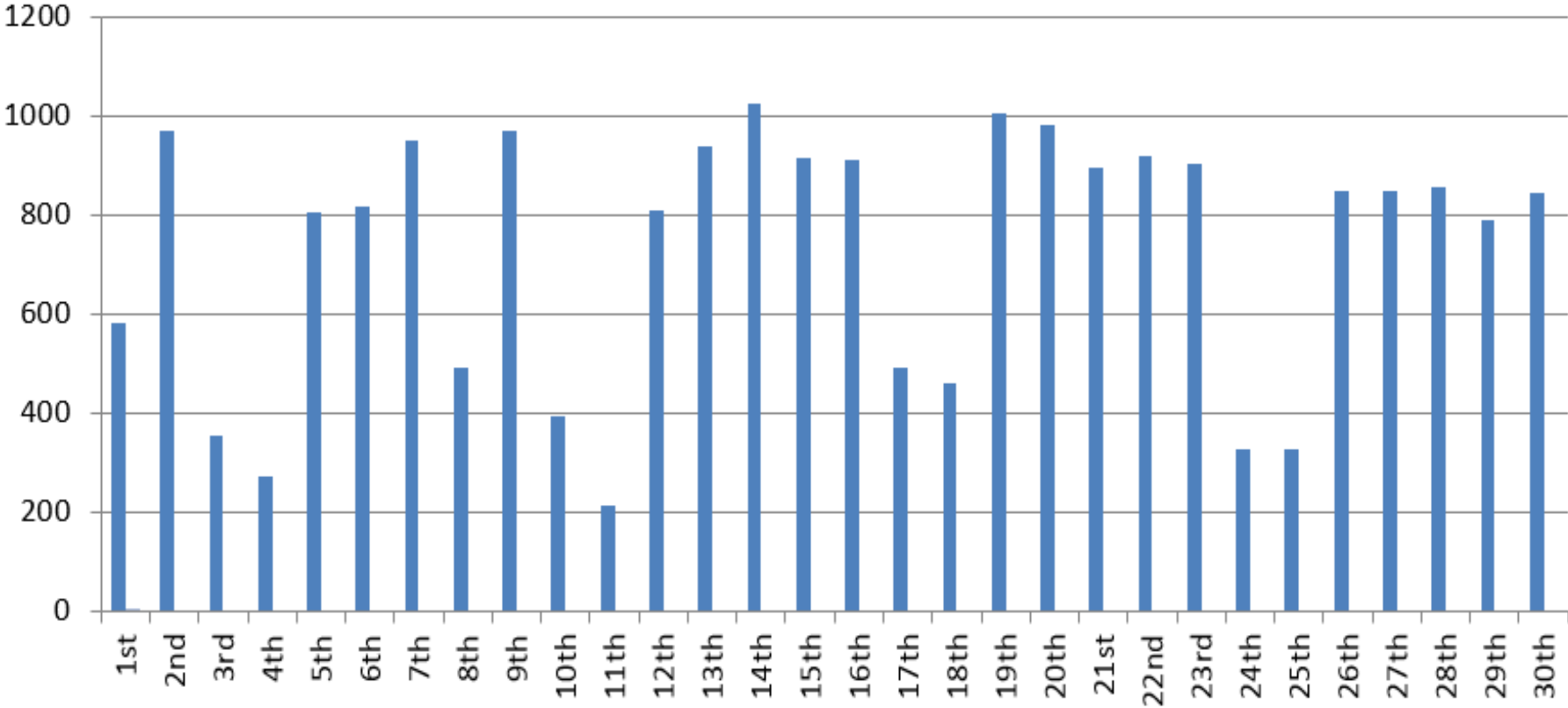
## Performance Indicators

June 2017



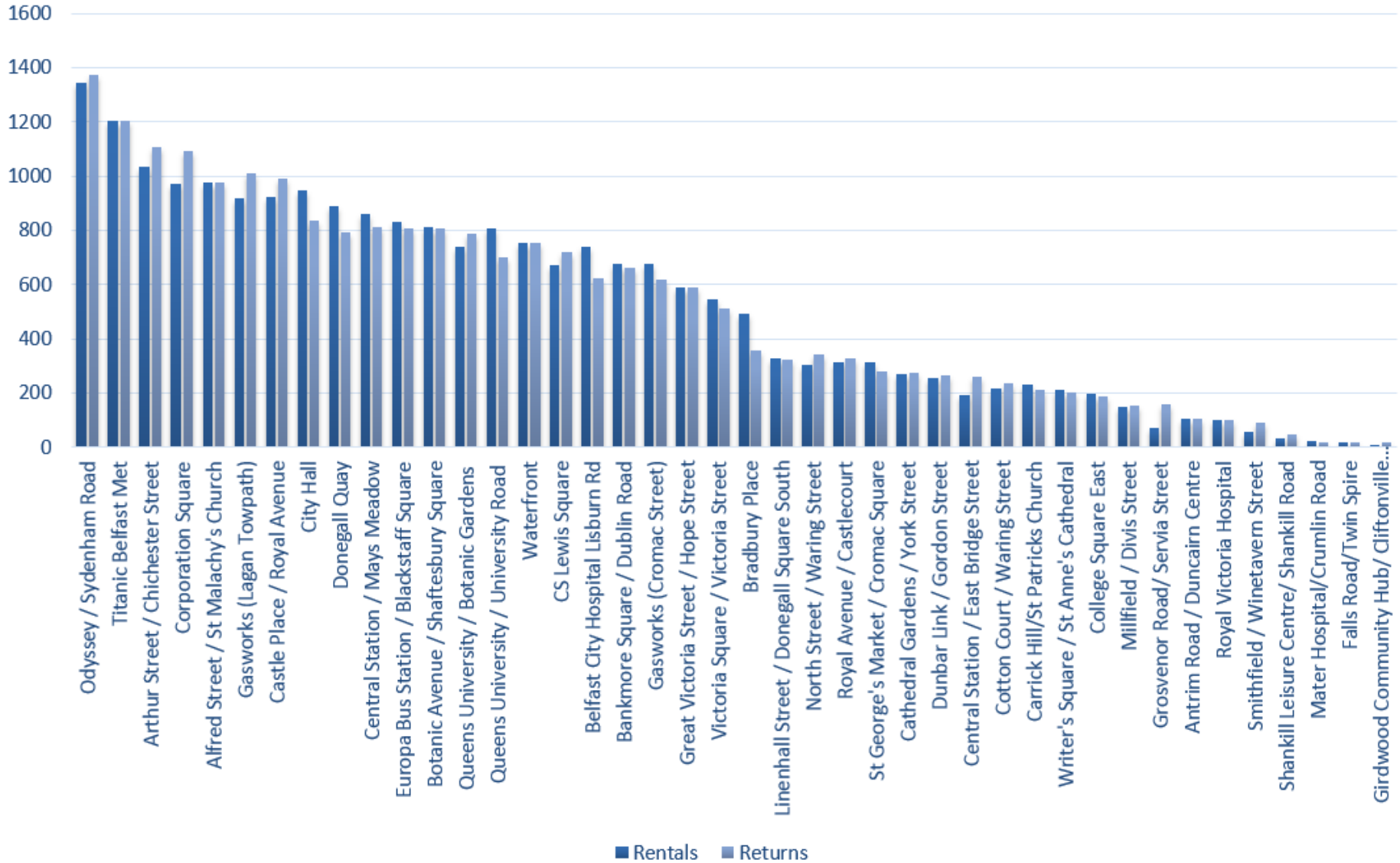
# June 2017

During the month of June, there were **21,902** rentals. The rental fluctuations are shown below:



# June 2017

The most popular stations in June for renting and returning combined were: (1) Odyssey (2) Titanic (3) Arthur Street



# June 2017

The total rentals to the end of June were **467,103**. The monthly fluctuations of rentals from the launch of the scheme are shown below.

## Cycle Hires

